



## MATERIALS

Steel Alloy.

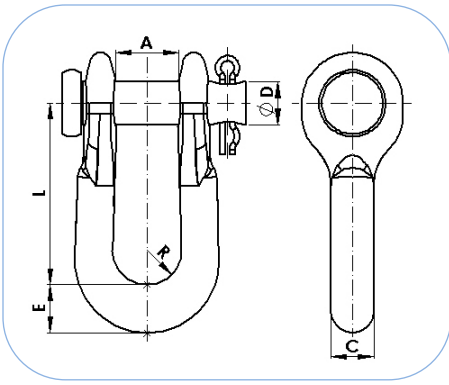
## PROTECTION AGAINST CORROSION

Hot dip galvanizing as per CSA-G164 and ASTM A153

## STANDARDS

All fittings are manufactured according to IEC 61284 standard.  
Fasteners: galvanized steel as per ASTM A325 and ASTM A563.  
Forged material: as per EN-10083 equivalent to ASTM A576.  
Locking pins: Stainless steel AISI 304.

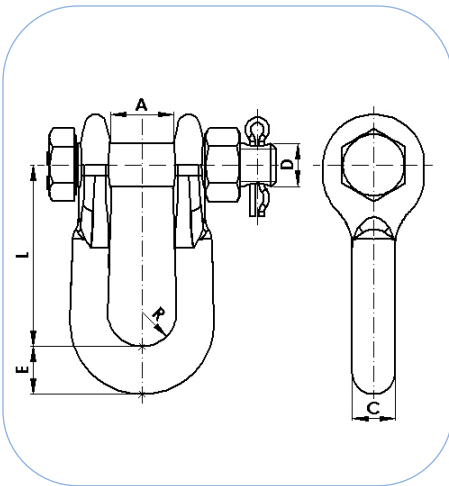
# STRAIGHT SHACKLES



**Material:** Forged steel EN-10083 equivalent to ASTM A576. **Rivets:** Galvanized steel.  
**Steel parts finish:** Hot dip galvanizing CSA-G164 / ASTM A153.

Reference	Dimensions (inch)						Ultimate Strength (lb)	Weight (lb)
	A	C	D	R	E	L		
GN-11/AM	0.89	0.47	5/8	0.45	0.47	2.36	22,000	0.71
GN-16/AM	0.94	0.63	5/8	0.51	0.71	2.68	22,000	1.04
GN-16-L/AM	0.87	0.63	5/8	0.75	0.71	3.54	23,000	1.17

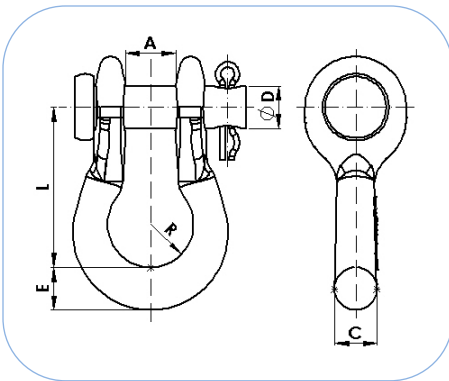
NOTE: Special fasteners upon request.



**Material:** Forged steel EN-10083 equivalent to ASTM A576. **Bolt:** ASTM A325.  
**Steel parts finish:** Hot dip galvanizing CSA-G164 / ASTM A153. **Nut:** ASTM A563.

Reference	Dimensions (inch)						Ultimate Strength (lb)	Weight (lb)
	A	C	D	R	E	L		
GN-11T/AM	0.89	0.47	5/8	0.45	0.47	2.36	22,000	0.84
GN-16T/AM	0.94	0.63	5/8	0.51	0.71	2.68	30,000	1.17
GN-16T-L/AM	0.87	0.63	5/8	0.75	0.71	3.54	30,000	1.32
GN-20/AM	0.98	0.75	3/4	0.67	0.83	3.70	48,000	2.25
GN-24/AM	0.98	0.75	7/8	0.67	0.83	3.70	54,000	2.54
GN-36/AM	1.12	1.02	1	0.67	1.06	4.25	80,000	4.01
GN-36-40/AM	1.12	1.02	1	0.67	1.06	4.25	100,000	3.95
GN-50/AM	1.50	1.22	1 1/4	0.87	1.26	4.86	110,000	7.05
GN-50-60/AM	1.50	1.22	1 1/4	0.87	1.26	4.86	135,000	6.99

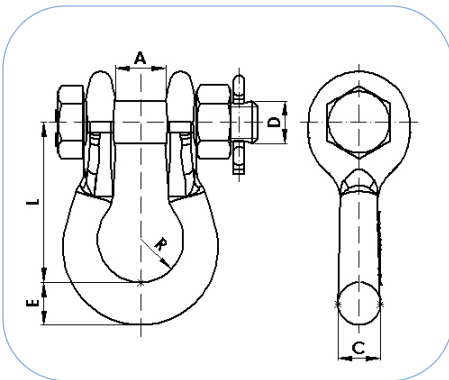
NOTE: Special fasteners upon request.



**Material:** Forged steel EN-10083 equivalent to ASTM A576. **Rivets:** Galvanized steel.  
**Steel parts finish:** Hot dip galvanizing CSA-G164 / ASTM A153.

Reference	Dimensions (inch)						Ultimate Strength (lb)	Weight (lb)
	A	C	D	R	E	L		
GN-16-B/AM	0.75	0.63	5/8	0.63	0.63	2.36	22,000	0.88

NOTE: Special fasteners upon request.



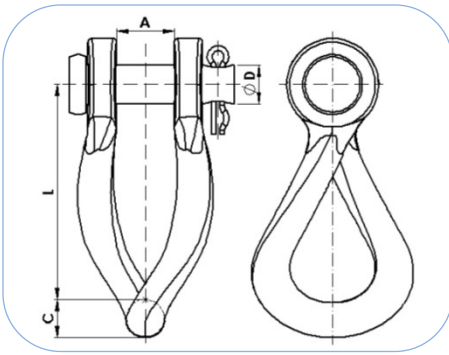
**Material:** Forged steel EN-10083 equivalent to ASTM A576. **Bolt:** ASTM A325.  
**Steel parts finish:** Hot dip galvanizing CSA-G164 / ASTM A153. **Nut:** ASTM A563.

Reference	Dimensions (inch)						Ultimate Strength (lb)	Weight (lb)
	A	C	D	R	E	L		
GN-16-BT/AM	0.75	0.63	5/8	0.63	0.63	2.36	28,000	1.01

NOTE: Special fasteners upon request.



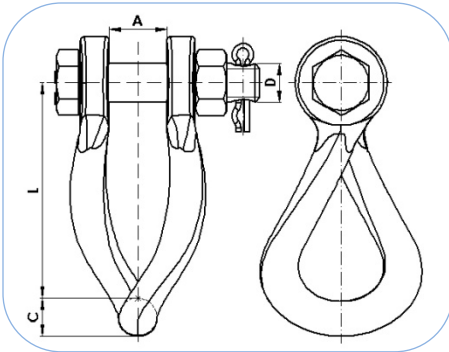
## TWISTED SHACKLES



**Material:** Forged steel EN-10083 equivalent to ASTM A576. **Rivets:** Galvanized steel.  
**Steel parts finish:** Hot dip galvanizing CSA-G164 / ASTM A153.

Reference	Dimensions (inch)				Ultimate Strength (lb)	Weight (lb)
	A	C	D	L		
GR-16-1/AM	0.94	0.63	5/8	3.54	22,000	1.26

NOTE: Special fasteners upon request.



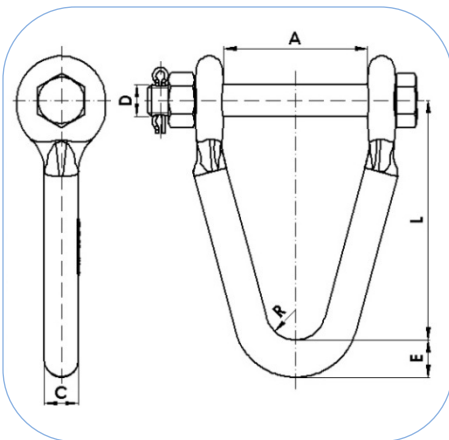
**Material:** Forged steel EN-10083 equivalent to ASTM A576. **Bolt:** ASTM A325.  
**Steel parts finish:** Hot dip galvanizing CSA-G164 / ASTM A153. **Nut:** ASTM A563.

Reference	Dimensions (inch)				Ultimate Strength (lb)	Weight (lb)
	A	C	D	L		
GR-16-1T/AM	0.94	0.63	5/8	3.54	30,000	1.39

NOTE: Special fasteners upon request.



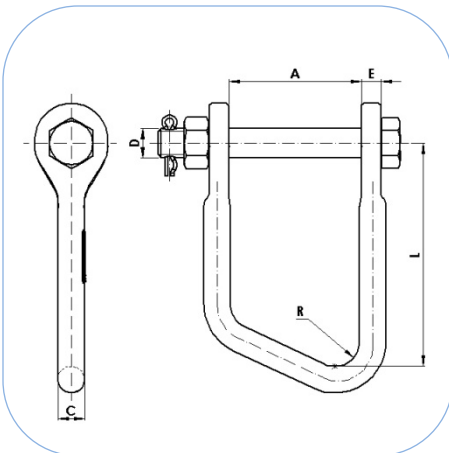
## SPECIAL SHACKLES



**Material:** Forged steel EN-10083 equivalent to ASTM A576. **Bolt:** ASTM A325.  
**Steel parts finish:** Hot dip galvanizing CSA-G164 / ASTM A153. **Nut:** ASTM A563.

Reference	Dimensions (inch)						Ultimate Strength (lb)	Weight (lb)
	A	C	D	R	E	L		
HS-22T/AM	3.19	0.75	3/4	0.67	0.83	5.31	48,000	3.02
HS-22-AT/AM	4.09	0.75	3/4	0.67	0.83	5.31	48,000	3.11

NOTE: Special fasteners upon request.



**Material:** Forged steel EN-10083 equivalent to ASTM A576. **Bolt:** ASTM A325.  
**Steel parts finish:** Hot dip galvanizing CSA-G164 / ASTM A153. **Nut:** ASTM A563.

Reference	Dimensions (inch)						Ultimate Strength (lb)	Weight (lb)
	A	C	D	R	E	L		
HA-20/AM	3.15	0.63	3/4	0.59	0.47	5.31	36,000	2.43

NOTE: Special fasteners upon request.

