

## MATERIALS

Steel Alloy.

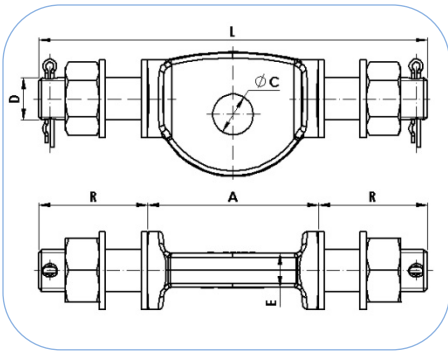
## PROTECTION AGAINST CORROSION

Hot dip galvanizing as per CSA-G164 and ASTM A153

## STANDARDS

All fittings are manufactured according to IEC 61284 standard.  
Fasteners: galvanised steel as per ASTM A325 and ASTM A563.  
Forged material: as per EN-10083 equivalent to ASTM A576.  
Locking pins: Stainless steel AISI 304.

## SWIVELS



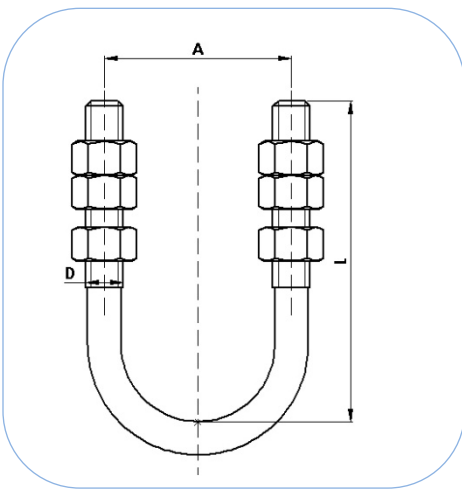
**Material:** Forged steel EN-10083 equivalent to ASTM A576. **Nut:** ASTM A563.  
**Steel parts finish:** Hot dip galvanizing CSA-G164 / ASTM A153.

| Reference | Dimensions (inch) |        |       |      |      |      | Ultimate Strength (lb) | Weight (lb) |
|-----------|-------------------|--------|-------|------|------|------|------------------------|-------------|
|           | A                 | C      | D     | E    | L    | R    |                        |             |
| MA-320/AM | 4.33              | 1 1/16 | 1 1/8 | 0.87 | 9.84 | 2.76 | 72,000                 | 5.36        |
| MA-160/AM | 4.33              | 3/4    | 3/4   | 0.79 | 7.95 | 1.81 | 36,000                 | 3.17        |

**NOTE:** Special bolts upon request.



## U-BOLTS



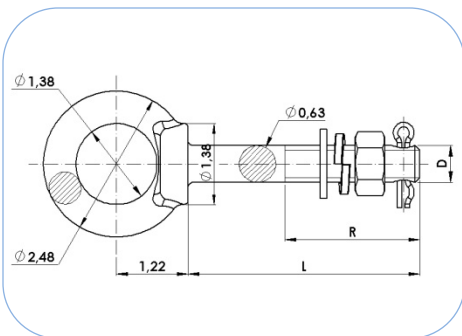
**Material:** Steel EN-ISO-898-1 equivalent to ASTM F568M. **Nut:** ASTM A563.  
**Steel parts finish:** Hot dip galvanizing CSA-G164 / ASTM A153.

| Reference     | Dimensions (inch) |   |   | Ultimate Strength (lb) | Weight (lb) |
|---------------|-------------------|---|---|------------------------|-------------|
|               | D                 | A | L |                        |             |
| E-1/2xAxL/AM  | 1/2               | A | L | 18,000                 | -           |
| E-9/16xAxL/AM | 9/16              | A | L | 22,000                 | -           |
| E-5/8xAxL/AM  | 5/8               | A | L | 27,000                 | -           |
| E-3/4xAxL/AM  | 3/4               | A | L | 36,000                 | -           |
| E-7/8xAxL/AM  | 7/8               | A | L | 48,000                 | -           |
| E-1xAxL/AM    | 1                 | A | L | 52,000                 | -           |
| E-DxAxL/AM    | D                 | A | L | -                      | -           |

**NOTES:** Other dimensions "D", "A" and "L" can be manufactured upon request.  
 U-Bolt "D" dimension dictates the breaking load. Breaking load.



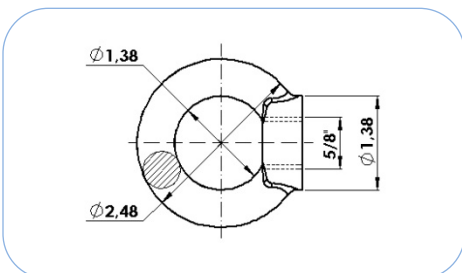
## EYE-BOLTS



**Material:** Forged steel EN-10083 equivalent to ASTM A576. **Nut:** ASTM A563.  
**Steel parts finish:** Hot dip galvanizing CSA-G164 / ASTM A153.

| Reference | Dimensions (inch) |   | Ultimate Strength (lb) | Weight (lb) |
|-----------|-------------------|---|------------------------|-------------|
|           | D                 | L |                        |             |
| TC-D-L/AM | D                 | L | 11,000                 | -           |

**NOTE:** Other "L" lengths can be manufactured upon request.



**Material:** Forged steel EN-10083 (similar to ASTM A576).  
**Steel parts finish:** Hot dip galvanizing ASTM A153.

| Reference | Ultimate Strength (lb) | Weight (lb) |
|-----------|------------------------|-------------|
| C-15/AM   | 11,000                 | 0.53        |

