

## MATERIALS

Rolled steel or stainless steel for highly corrosive environments.

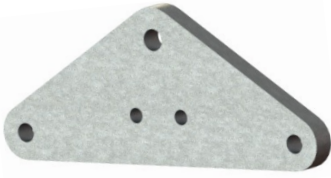
## PROTECTION AGAINST CORROSION

Hot dip galvanizing according to CSA-G164 and ASTM A153 Standards.

## STANDARDS

All yoke plates are manufactured according to IEC 61284 Standard.  
Fasteners material: galvanized steel as per ASTM A325 and ASTM A563 standards.  
Steel plates material: as EN-10025 equivalent to ASTM A36 or ASTM A572 standards.  
Locking pins: Stainless steel as per AISI 304.

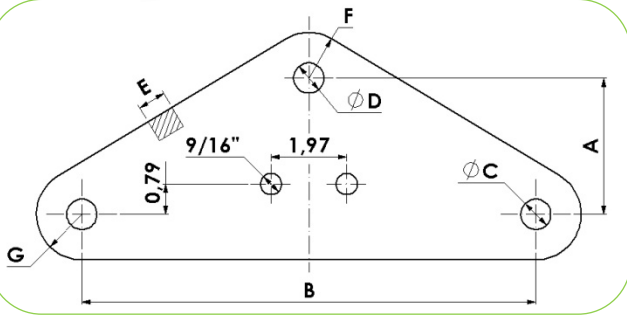
## TRIANGULAR YOKE PLATES



**Material:** Steel plate EN-10025 equivalent to ASTM A36 or ASTM A572.  
**Steel parts finish:** Hot dip galvanizing CSA-G164 / ASTM A153.

Reference	Dimensions (inch)							Ultimate Strength (lb)	Weight (lb)
	A	B	C	D	E	F	G		
Y-16/B-14/AM	3.54	B	11/16	11/16	0.63	0.98	0.98	32,000	-
Y-16/B-21/AM	3.54	B	11/16	13/16	0.71	1.18	0.98	48,000	-
Y-16/B-22/AM	3.54	B	11/16	7/8	0.71	1.18	0.98	50,000	-
Y-16/B-25/AM	3.54	B	11/16	15/16	0.87	1.38	0.98	56,000	-
Y-20/B-21/AM	3.54	B	13/16	13/16	0.87	1.18	1.18	48,000	-
Y-20/B-22/AM	3.54	B	13/16	7/8	0.87	1.18	1.18	50,000	-
Y-20/B-25/AM	3.54	B	13/16	15/16	0.87	1.57	1.18	56,000	-
Y-20/B-36/AM	3.54	B	13/16	1 1/16	0.87	1.65	1.18	80,000	-
Y-24/B-50/AM	3.94	B	15/16	1 5/16	1.02	2.36	1.38	110,000	-

NOTE: Any other reference can be manufactured upon request.  
 Dimension "B" depends on the separation of the bundle conductor.



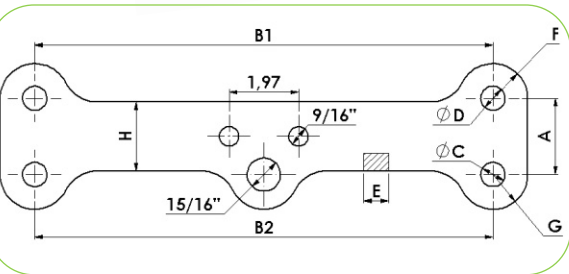
## SPACER YOKE PLATES



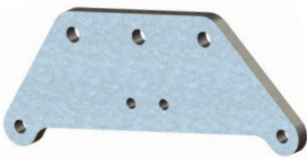
**Material:** Steel plate EN-10025 equivalent to ASTM A36 or ASTM A572.  
**Steel parts finish:** Hot dip galvanizing CSA-G164 / ASTM A153.

Reference	Dimensions (inch)									Ultimate Strength (lb)	Weight (lb)
	A	B1	B2	C	D	E	F	G	H		
YL-1/L-B/AM	2.17	L	B	11/16	11/16	0.63	0.98	0.98	1.97	60,000	-
YL-2/L-B/AM	2.17	L	B	11/16	11/16	0.63	0.98	0.98	1.97	60,000	-
YL-3/L-B/AM	2.95	L	B	13/16	13/16	0.87	1.18	1.18	2.36	80,000	-
YL-4/L-B/AM	2.56	L	B	15/16	15/16	0.87	1.38	1.38	2.36	110,000	-

NOTE: Any other reference can be manufactured upon request.  
 Dimensions "B1" and "B2" depends on the separation of the bundle conductor.



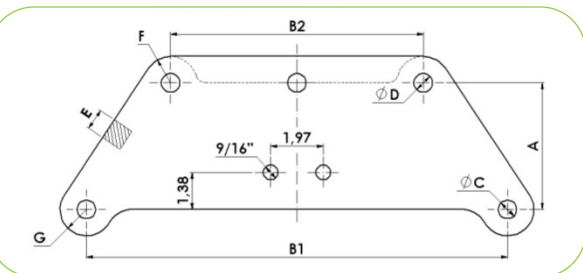
## TRAPEZOIDAL YOKE PLATES



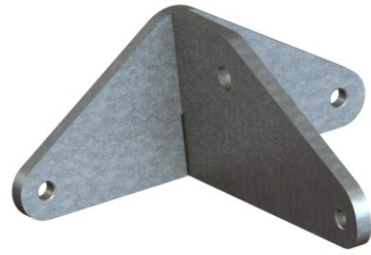
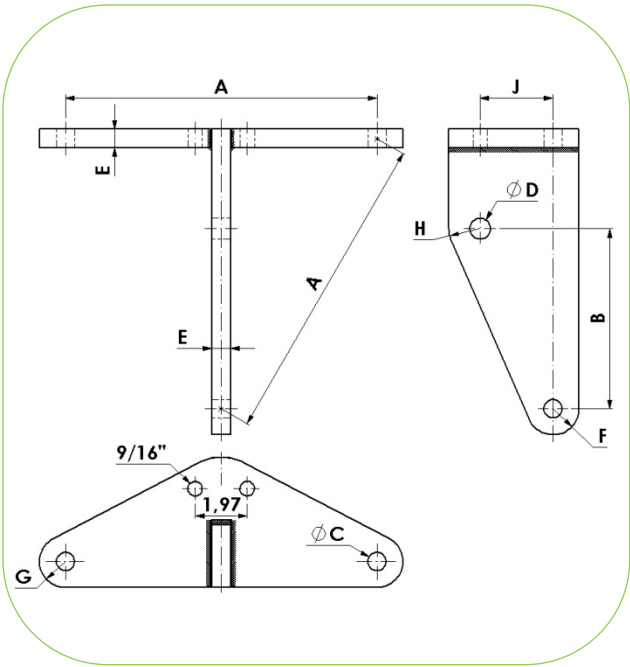
**Material:** Steel plate EN-10025 equivalent to ASTM A36 or ASTM A572.  
**Steel parts finish:** Hot dip galvanizing CSA-G164 / ASTM A153.

Reference	Dimensions (inch)								Ultimate Strength (lb)	Weight (lb)
	A	B1	B2	C	D	E	F	G		
YVD-16/L-B/AM	4.72	L	B	11/16	11/16	0.71	0.98	0.98	60,000	-
YVD-20/L-B/AM	4.72	L	B	13/16	13/16	0.87	1.18	1.18	80,000	-
YVD-24/L-B/AM	4.72	L	B	15/16	15/16	0.87	1.38	1.38	110,000	-

NOTE: Any other reference can be manufactured upon request.  
 Dimensions "B1" and "B2" depends on the separation of the bundle conductor.



## TRIPLE TENSION YOKES

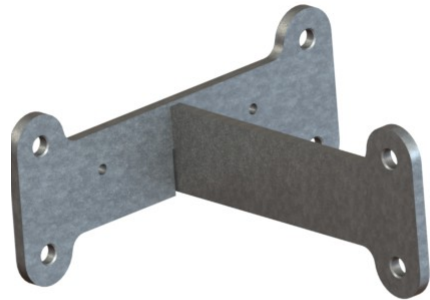
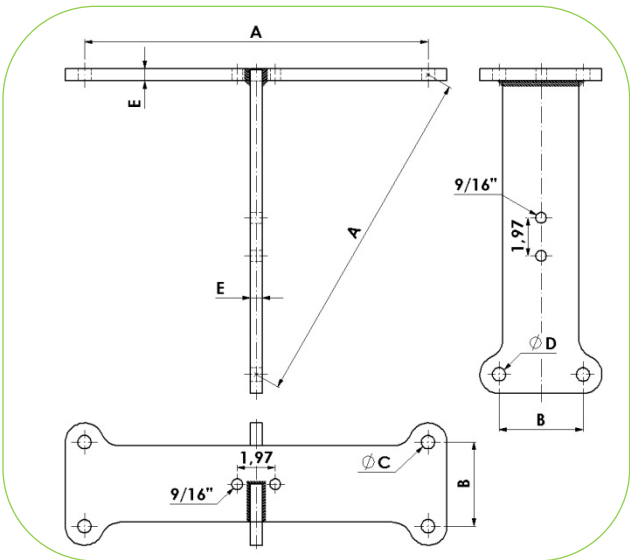


**Material:** Steel plate EN-10025 equivalent to ASTM A36 or ASTM A572.  
**Steel parts finish:** Hot dip galvanizing CSA-G164 / ASTM A153.

Reference	Dimensions (inch)									Ultimate Strength (lb)	Weight (lb)
	A	B	C	D	E	F	G	H	J		
YTA-3-16-16/L/AM	L	0.58 L	11/16	11/16	0.63	0.98	0.98	0.98	2.76	28,000	-
YTA-3-16-21/L/AM	L	0.58 L	11/16	13/16	0.71	0.98	0.98	1.18	2.76	48,000	-
YTA-3-16-36/L/AM	L	0.58 L	11/16	1 1/16	0.71	0.98	0.98	1.97	4.33	80,000	-
YTA-3-20-21/L/AM	L	0.58 L	13/16	13/16	0.71	1.18	1.18	1.18	2.76	48,000	-
YTA-3-20-36/L/AM	L	0.58 L	13/16	1 1/16	0.71	1.18	1.18	1.97	4.33	80,000	-
YTA-3-24-50/L/AM	L	0.58 L	15/16	1 3/8	0.87	1.38	1.38	2.36	4.33	110,000	-

NOTE: Any other reference can be manufactured upon request.  
 Dimension "A" depends on the separation of the bundle conductor.

## TRIPLE SPACER YOKES

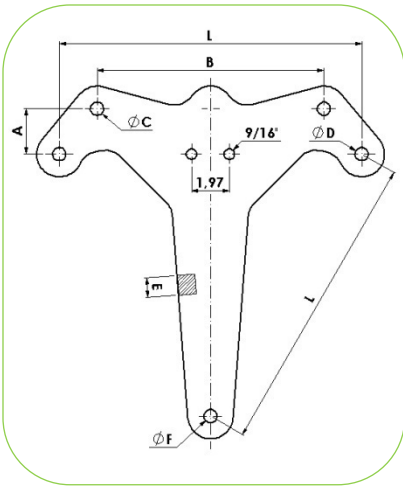


**Material:** Steel plate EN-10025 equivalent to ASTM A36 or ASTM A572.  
**Steel parts finish:** Hot dip galvanizing CSA-G164 / ASTM A153.

Reference	Dimensions (inch)					Ultimate Strength (lb)	Weight (lb)
	A	B	C	D	E		
YTP-3-16-36/L/AM	L	4.33	11/16	11/16	0.63	80,000	-
YTP-3-20-50/L/AM	L	4.33	13/16	13/16	0.71	110,000	-

NOTE: Any other reference can be manufactured upon request.  
 Dimension "A" depends on the separation of the bundle conductor.

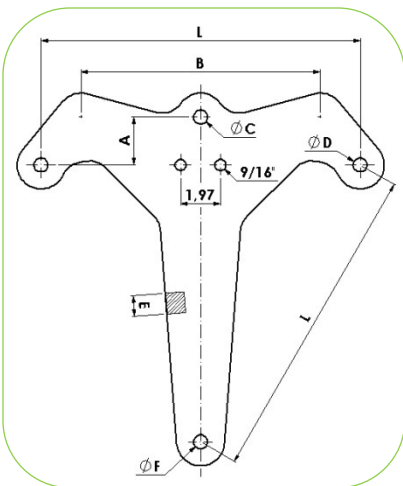
# TRIPLE SUSPENSION YOKES



**Material:** Steel plate EN-10025 equivalent to ASTM A36 or ASTM A572.  
**Steel parts finish:** Hot dip galvanizing CSA-G164 / ASTM A153.

Reference	Dimensions (inch)							Ultimate Strength (lb)	Weight (lb)
	A	B	C	D	E	F	L		
YTSV-16-14/L/AM	2.36	11.81	11/16	11/16	0.71	11/16	L	32,000	-
YTSV-16-21/L/AM	2.36	11.81	13/16	11/16	0.79	11/16	L	48,000	-

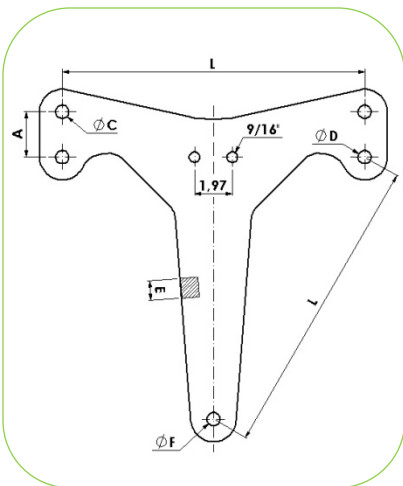
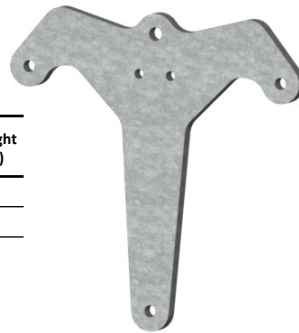
NOTE: Any other reference can be manufactured upon request.  
 Dimension "L" depends on the separation of the bundle conductor.



**Material:** Steel plate EN-10025 equivalent to ASTM A36 or ASTM A572.  
**Steel parts finish:** Hot dip galvanizing CSA-G164 / ASTM A153.

Reference	Dimensions (inch)							Ultimate Strength (lb)	Weight (lb)
	A	B	C	D	E	F	L		
YTSI-16-14/L/AM	2.36	11.81	11/16	11/16	0.71	11/16	L	32,000	-
YTSI-16-21/L/AM	2.36	11.81	13/16	11/16	0.79	11/16	L	48,000	-

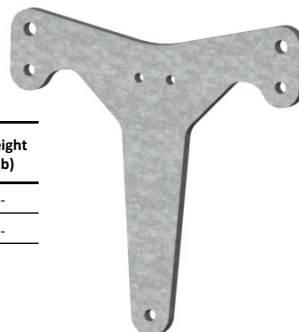
NOTE: Any other reference can be manufactured upon request.  
 Dimension "L" depends on the separation of the bundle conductor.



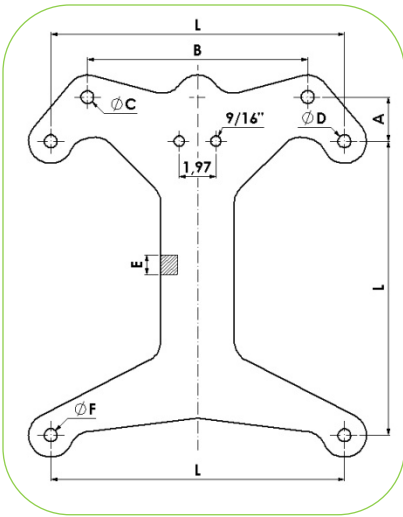
**Material:** Steel plate EN-10025 equivalent to ASTM A36 or ASTM A572.  
**Steel parts finish:** Hot dip galvanizing CSA-G164 / ASTM A153.

Reference	Dimensions (inch)						Ultimate Strength (lb)	Weight (lb)
	A	C	D	E	F	L		
YTSD-16-14/L/AM	2.36	11/16	11/16	0.71	11/16	L	32,000	-
YTSD-16-21/L/AM	2.36	13/16	11/16	0.79	11/16	L	48,000	-

NOTE: Any other reference can be manufactured upon request.  
 Dimension "L" depends on the separation of the bundle conductor.



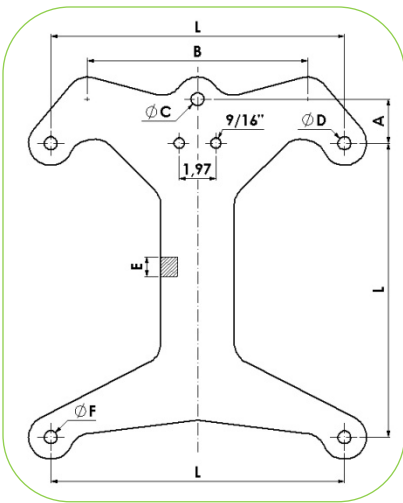
# QUADRUPLE SUSPENSION YOKES



**Material:** Steel plate EN-10025 equivalent to ASTM A36 or ASTM A572.  
**Steel parts finish:** Hot dip galvanizing CSA-G164 / ASTM A153.

Reference	Dimensions (inch)							Ultimate Strength (lb)	Weight (lb)
	A	B	C	D	E	F	L		
YCSV-16-14/L/AM	2.36	11.81	11/16	11/16	0.71	11/16	L	32,000	-
YCSV-16-21/L/AM	2.36	11.81	13/16	11/16	0.79	11/16	L	48,000	-

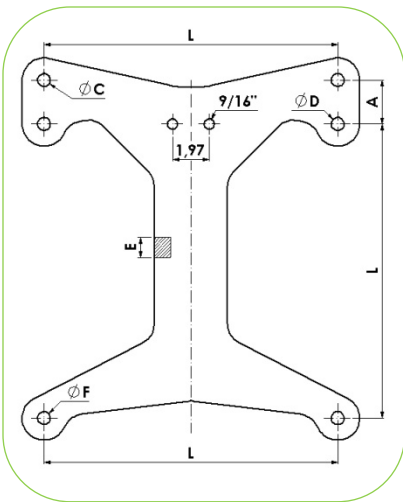
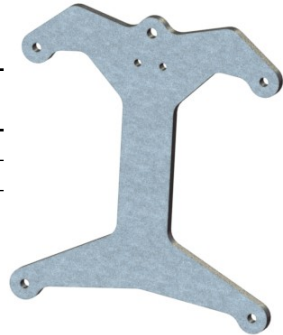
NOTE: Any other reference can be manufactured upon request.  
 Dimension "L" depends on the separation of the bundle conductor.



**Material:** Steel plate EN-10025 equivalent to ASTM A36 or ASTM A572.  
**Steel parts finish:** Hot dip galvanizing CSA-G164 / ASTM A153.

Reference	Dimensions (inch)							Ultimate Strength (lb)	Weight (lb)
	A	B	C	D	E	F	L		
YCSI-16-14/L/AM	2.36	11.81	11/16	11/16	0.71	11/16	L	32,000	-
YCSI-16-21/L/AM	2.36	11.81	13/16	11/16	0.79	11/16	L	48,000	-

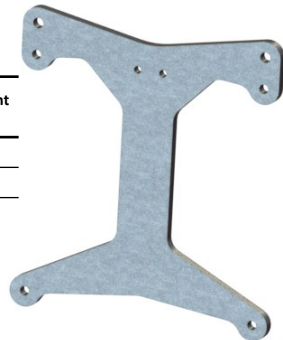
NOTE: Any other reference can be manufactured upon request.  
 Dimension "L" depends on the separation of the bundle conductor.



**Material:** Steel plate EN-10025 equivalent to ASTM A36 or ASTM A572.  
**Steel parts finish:** Hot dip galvanizing CSA-G164 / ASTM A153.

Reference	Dimensions (inch)						Ultimate Strength (lb)	Weight (lb)
	A	C	D	E	F	L		
YCS-16-14/L/AM	2.36	11/16	11/16	0.71	11/16	L	32,000	-
YCS-16-21/L/AM	2.36	13/16	11/16	0.79	11/16	L	48,000	-

NOTE: Any other reference can be manufactured upon request.  
 Dimension "L" depends on the separation of the bundle conductor.



---

## SPECIAL YOKES

---

Yokes with specific configurations can be manufactured upon request: articulate, diamond-shape, etc.

