

MATERIALS

Cast parts: Aluminum Alloy
Forged steel parts: Steel Alloy.

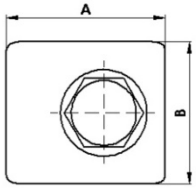
PROTECTION AGAINST CORROSION

Steel Parts: Hot dip galvanising according to CSA-G164 and ASTM A153 standards.

STANDARDS

All parts are manufactured according to IEC 61284 standard.
Fasteners: galvanized steel as per ASTM A325 and ASTM A563 standards.
Forged material: EN-10083 equivalent to ASTM A576.
Cast aluminum alloy materials: EN-1706 equivalent to ANSI A413.0.
Aluminum alloy material: EN-755 equivalent to ASTM B221.

GROUNDING CONNECTORS FOR GALVANIZED STEEL CABLES

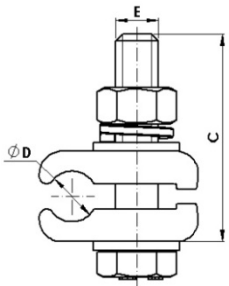


Material Forged steel EN-10083 equivalent to ASTM A576.
Steel Parts finish: Hot dip galvanizing CSA-G164 / ASTM A153.

Bolt: ASTM A325.
Nut: ASTM A563.

Reference	ØD Conductor (inch)		Dimensions (inch)				Tightening Torque (in-lb)	Weight (lb)
	Min.	Max.	A	B	C	E		
GCS-14/AM	0.35	0.55	1.73	1.57	2.36	1/2	260	0.66

NOTE: Special fasteners upon request.

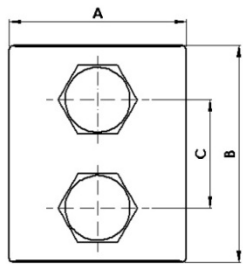
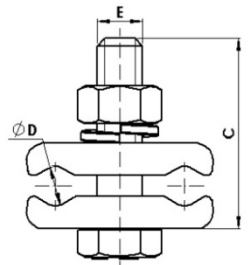
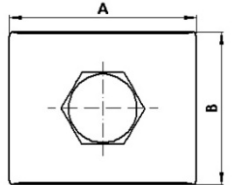


Material Forged steel EN-10083 equivalent to ASTM A576.
Steel Parts finish: Hot dip galvanizing CSA-G164 / ASTM A153.

Bolt: ASTM A325.
Nut: ASTM A563.

Reference	ØD Conductor (inch)		Dimensions (inch)				Tightening Torque (in-lb)	Weight (lb)
	Min.	Max.	A	B	C	E		
GCP-14/AM	0.24	0.55	1.93	1.57	2.36	1/2	260	0.66

NOTE: Special fasteners upon request.

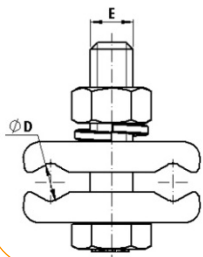


Material Forged steel EN-10083 equivalent to ASTM A576.
Steel Parts finish: Hot dip galvanizing CSA-G164 / ASTM A153.

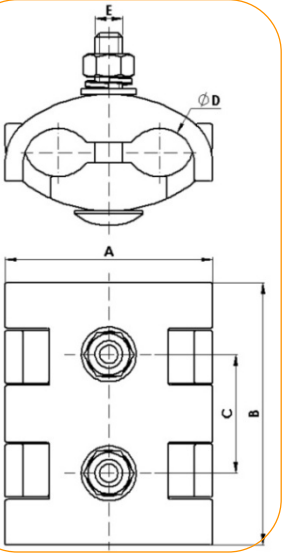
Bolt: ASTM A325.
Nut: ASTM A563.

Reference	ØD Conductor (inch)		Dimensions (inch)				Tightening Torque (in-lb)	Weight (lb)
	Min.	Max.	A	B	C	E		
GCP-14/AM	0.24	0.55	1.93	2.36	1.18	1/2	260	0.99

NOTE: Special fasteners upon request.



GROUNDING CONNECTORS FOR ALUMOWELD, OPGW, AL Y AL-AC CABLES

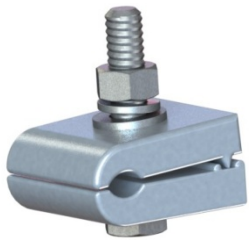


Material: Alloy A1. EN-1706 equivalent to ANSI A413.0.
Steel Parts finish: Hot dip galvanizing CSA-G164 / ASTM A153.

Bolt: ASTM A325.
Nut: ASTM A563.

Reference	ØD Conductor (inch)		Dimensions (inch)				Tightening Torque (in-lb)	Weight (lb)
	Min.	Max.	A	B	C	E		
GPC-8/16/AM	0.31	0.63	2.13	2.34	1.22	3/8	220	0.55
GPC-11/28/AM	0.43	1.10	3.58	4.53	2.05	1/2	260	1.92

NOTE: Special fasteners upon request.

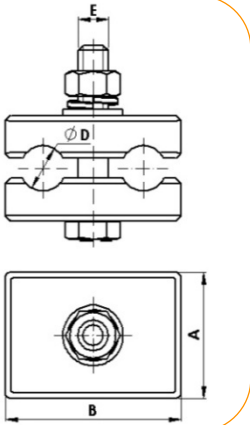
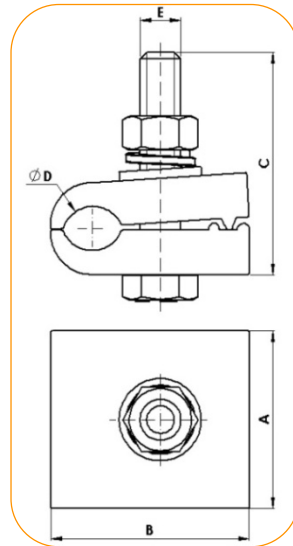


Material: Alloy A1. EN-1706 equivalent to ANSI A413.0.
Steel Parts finish: Hot dip galvanizing CSA-G164 / ASTM A153.

Bolt: ASTM A325.
Nut: ASTM A563.

Reference	ØD Conductor (inch)		Dimensions (inch)				Tightening Torque (in-lb)	Weight (lb)
	Min.	Max.	A	B	C	E		
GCSAL-8/14/AM	0.31	0.55	2.05	2.28	2.56	1/2	260	0.62
GCSAL-14/18/AM	0.55	0.71	2.05	2.28	2.56	1/2	260	0.55
GCSAL-18/24/AM	0.71	0.94	2.36	2.56	3.15	1/2	260	0.99

NOTE: Special fasteners upon request.

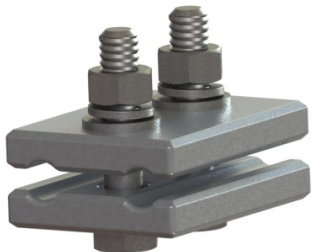
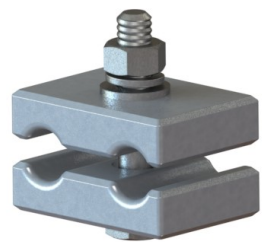


Material: Alloy A1. EN-1706 equivalent to ANSI A413.0.
Steel Parts finish: Hot dip galvanizing CSA-G164 / ASTM A153.

Bolt: ASTM A325.
Nut: ASTM A563.

Reference	ØD Conductor (inch)		Dimensions (inch)			Tightening Torque (in-lb)	Weight (lb)
	Min.	Max.	A	B	E		
GCPSAL-8/14/AM	0.31	0.55	1.97	2.76	1/2	260	0.88
GCPSAL-14/18/AM	0.55	0.71	1.97	2.76	1/2	260	0.82
GCPSAL-18/24/AM	0.71	0.94	1.97	2.76	1/2	260	0.77

NOTE: Special fasteners upon request.

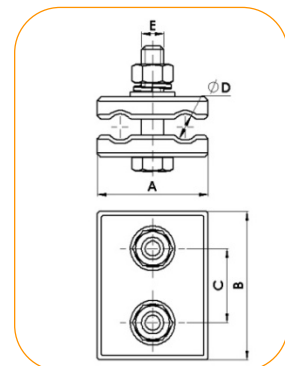


Material: Alloy A1. EN-1706 equivalent to ANSI A413.0.
Steel Parts finish: Hot dip galvanizing CSA-G164 / ASTM A153.

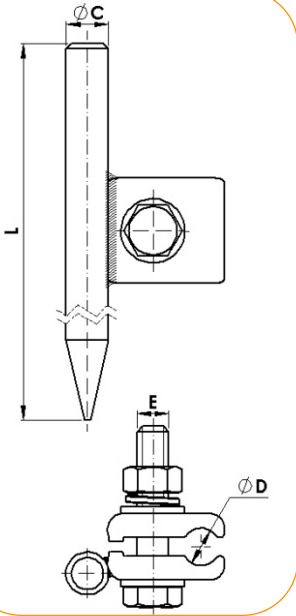
Bolt: ASTM A325.
Nut: ASTM A563.

Reference	ØD Conductor (inch)		Dimensions (inch)				Tightening Torque (in-lb)	Weight (lb)
	Min.	Max.	A	B	C	E		
PC-6-14/AM	0,24	0,55	2,36	3,15	1,57	1/2	260	0,99

NOTE: Special fasteners upon request.



GROUNDING ROD WITH CONNECTOR

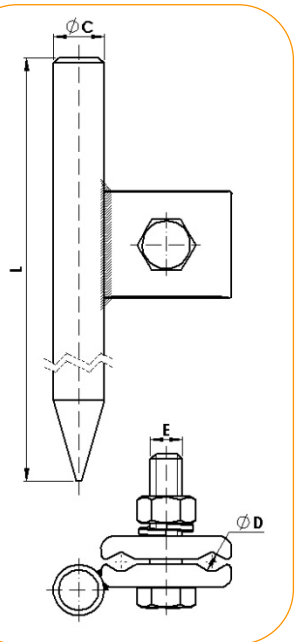


Material: Forged steel EN-10083 equivalent to ASTM A576.
Steel Parts finish: Hot dip galvanizing CSA-G164 / ASTM A153.

Bolt: ASTM A325.
Nut: ASTM A194.

Reference	ØD Conductor (inch)		Dimensions (inch)			Tightening Torque (in-lb)	Weight (lb)
	Min.	Max.	L	C	E		
PT-2000/25C/AM	0.35	0.55	78.74	0.98	1/2	260	9.92
PT-2400/16C/AM	0.35	0.55	94.49	0.63	1/2	260	8.82
PT-3000/16C/AM	0.35	0.55	118.11	0.63	1/2	260	11.02

NOTE: Special fasteners upon request.



Material: Forged steel EN-10083 equivalent to ASTM A576.
Steel Parts finish: Hot dip galvanizing CSA-G164 / ASTM A153.

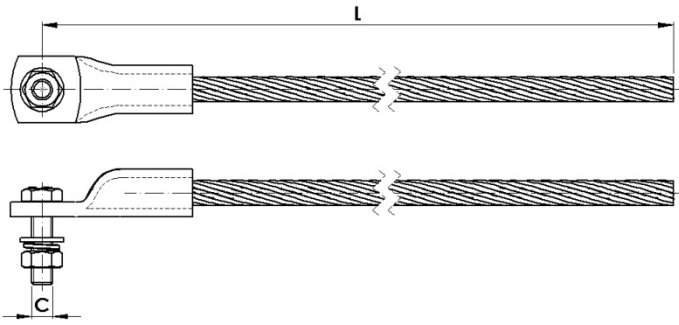
Bolt: ASTM A325.
Nut: ASTM A194.

Reference	ØD Conductor (inch)		Dimensions (inch)			Tightening Torque (in-lb)	Weight (lb)
	Min.	Max.	L	C	E		
PT-3000/16C/6-14/AM	0.24	0.55	118.11	0.63	1/2	260	11.02
PT-3000/19C/6-14/AM	0.24	0.55	118.11	0.75	1/2	260	15.43

NOTE: Special fasteners upon request.



GROUNDING STRAP

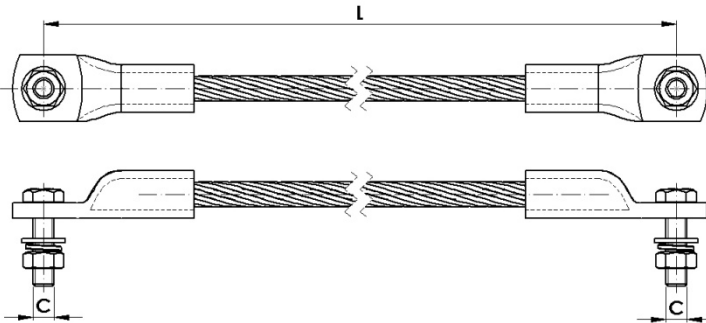


Material: Terminal: Alloy A1. EN-755 equivalent to ASTM B221.
Cable: Aluminum.
Steel Parts finish: Hot dip galvanizing CSA-G164 / ASTM A153.

Bolt: ASTM A325 and Stainless steel.
Nut: ASTM A563.

Reference	Dimensions (inch)		Tightening Torque (in-lb)	Weight (lb)
	L	C		
CC1TT-120x1000-1/2	39.37	1/2	260	0.95
CC1TT-120x1200-3/8	47.24	3/8	260	0.99
CC1TT-120x2000-1/2	78.74	1/2	260	1.87

NOTE: Special fasteners upon request.



Material: Terminal: Alloy A1. EN-755 equivalent to ASTM B221.
Cable: Aluminum.
Steel Parts finish: Hot dip galvanising CSA-G164 / ASTM A153.

Bolt: ASTM A325 and Stainless steel.
Nut: ASTM A563.

Reference	Dimensions (inch)			Tightening Torque (in-lb)	Weight (lb)
	L	C	D		
CC2TT-120x1200-5/8-1/2	47.24	1/2	5/8	260	0.99
CC2TT-120x1200-5/8-3/8	47.24	3/8	5/8	260	0.99
CC2TT-120x1200-1/2-3/8	47.24	3/8	1/2	260	0.99

NOTE: Special fasteners upon request.