

MATERIALS

Spheroidal cast bodies: Grey iron.
Forged steel parts: Steel Alloy
Steel plate parts: Steel plate.

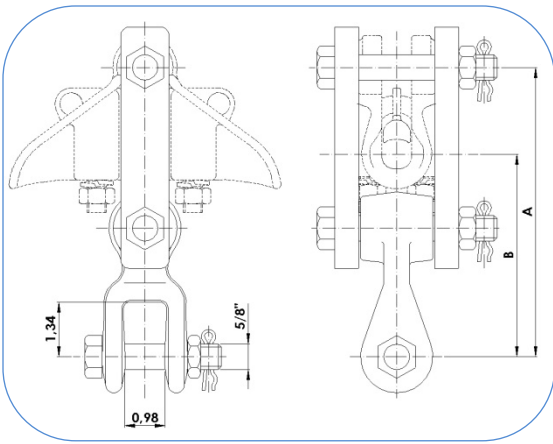
PROTECTION AGAINST CORROSION

Steel Parts: Hot dip galvanizing according to CSA-G164 / ASTM A153.

STANDARDS

All parts are manufactured according to IEC 61284 standard.
Fasteners: galvanized steel, as per ASTM A325 and ASTM A563 standards.
Forged material: EN-10083 equivalent to ASTM A576.
Steel plate material: EN-10025 equivalent to ASTM A36 or ASTM A572.
Spheroidal cast materials: EN-1563 equivalent to ASTM A48.

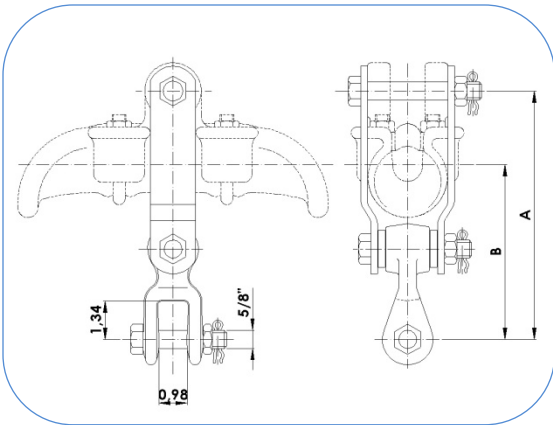
COUNTERWEIGHT ATTACHMENTS



Material: Clevis eye: Forged steel EN-10083 equivalent to ASTM A576.
Platen: Steel plate EN-10025 equivalent to ASTM A36 or ASTM A572.
Bolt: ASTM A325.
Nut: ASTM A563.
Steel Parts finish: Hot dip galvanizing CSA-G164 / ASTM A153.

Reference	Clamp	Dimensions (inch)		Weight (lb)
		A	B	
ECP-1/AM	GS-1/AM	7.09	5.43	4.85
ECP-2/AM	GS-2/AM	7.09	5.12	4.85

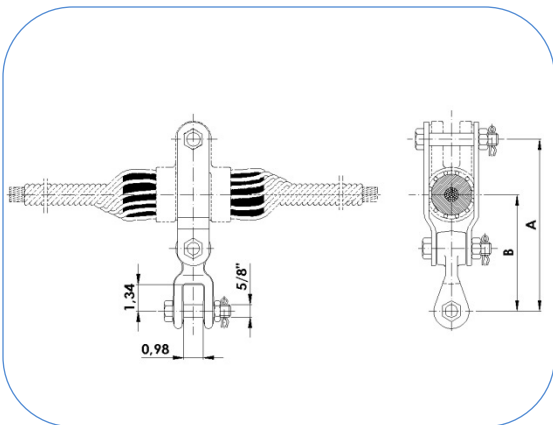
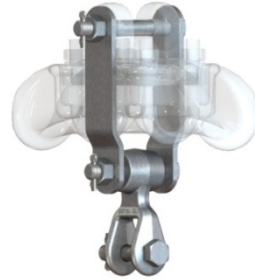
NOTE: Special fasteners upon request.



Material: Clevis eye: Forged steel EN-10083 equivalent to ASTM A576.
Platen: Steel plate EN-10025 equivalent to ASTM A36 or ASTM A572.
Bolt: ASTM A325.
Nut: ASTM A563.
Steel Parts finish: Hot dip galvanizing CSA-G164 / ASTM A153.

Reference	Clamp	Dimensions (inch)		Weight (lb)
		A	B	
ECP-3/AM	GS-3/AM	8.66	6.54	5.51
ECP-4/AM	GS-4/AM	8.66	6.65	5.51
ECP-5/AM	GS-5/AM	8.66	6.22	5.51
ECP-4-A/AM	GS-4-AE/AM	8.66	6.06	5.51
ECP-5-A/AM	GS-5-AE/AM	8.66	5.91	5.51
ECP-6-A/AM	GS-6-AE/AM	8.66	5.67	5.51
ECP-7-A/AM	GS-7-AE/AM	11.02	8.03	5.95

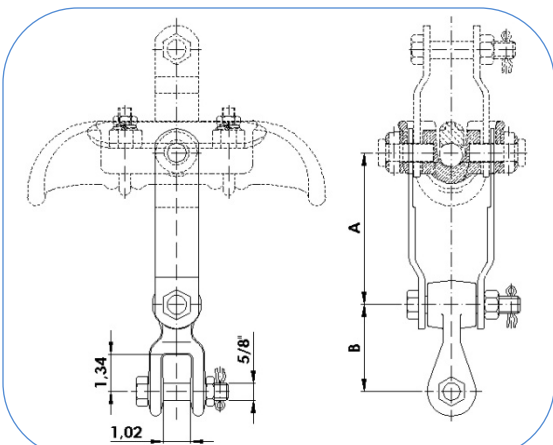
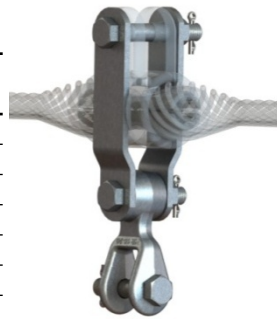
NOTE: Special fasteners upon request.



Material: Clevis eye: Forged steel EN-10083 equivalent to ASTM A576.
Platen: Steel plate EN-10025 equivalent to ASTM A36 or ASTM A572.
Bolt: ASTM A325.
Nut: ASTM A563.
Steel Parts finish: Hot dip galvanizing CSA-G164 / ASTM A153.

Reference	Clamp	Dimensions (inch)		Weight (lb)
		A	B	
ECP-1S/AM	GAS-1/AM	8.66	6.46	5.51
ECP-3S/AM	GAS-3/AM	8.66	6.06	5.51
ECP-4S/AM	GAS-4/AM	8.66	5.98	5.51
ECP-5S/AM	GAS-5/AM	8.66	5.91	5.95
ECP-6S/AM	GAS-6/AM	8.66	5.91	5.95
ECP-7S/AM	GAS-7/AM	11.02	7.87	6.61
ECP-8S/AM	GAS-8/AM	11.02	7.87	6.61

NOTE: Special fasteners upon request.



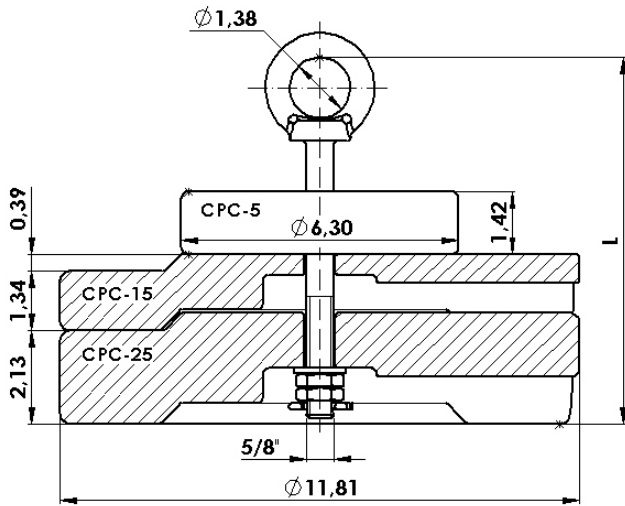
Material: Clevis eye: Forged steel EN-10083 equivalent to ASTM A576.
Platen: Steel plate EN-10025 equivalent to ASTM A36 or ASTM A572.
Bolt: ASTM A325.
Nut: ASTM A563.
Steel Parts finish: Hot dip galvanizing CSA-G164 / ASTM A153.

Reference	Clamp	Dimensions (inch)		Weight (lb)
		A	B	
ECP-4/AM	GST-4/AM	5.51	3.15	3.97
ECP-5/AM	GST-5/AM	5.51	3.15	3.97
ECP-6/AM	GST-6/AM	5.51	3.15	3.97

NOTE: Special fasteners upon request.



CYLINDRICAL COUNTERWEIGHTS



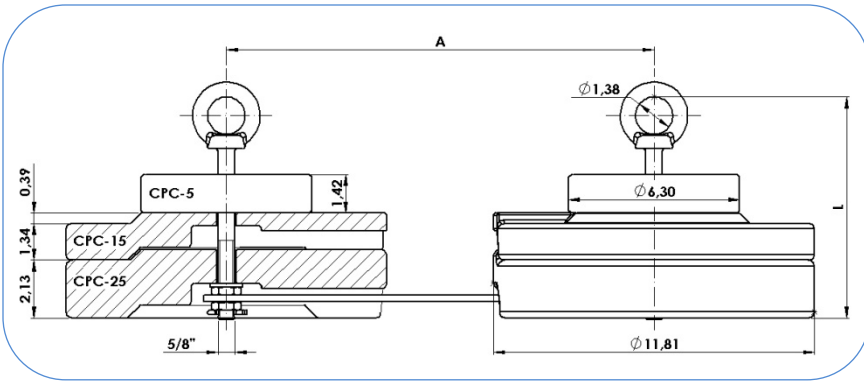
Material: Body: Cast iron EN-1563 equivalent to ASTM A48.
Steel Parts finish: Hot dip galvanizing CSA-G164 / ASTM A153.

Nut: ASTM A563.

Reference	Weight (lb)	Number of counterweights			Eye Bolt	L (inch)
		CPC-5	CPC-15	CPC-25		
CPC-5/AM	11	1	-	-	TC-16-100/AM	5.91
CPC-10/AM	22	2	-	-	TC-16-100/AM	5.91
CPC-15/AM	33	-	1	-	TC-16-100/AM	5.91
CPC-20/AM	44	1	1	-	TC-16-100/AM	5.91
CPC-25/AM	55	-	-	1	TC-16-100/AM	5.91
CPC-30/AM	66	1	-	1	TC-16-100/AM	5.91
CPC-40/AM	88	-	1	1	TC-16-100/AM	5.91
CPC-50/AM	110	-	-	2	TC-16-160/AM	8.27
CPC-60/AM	132	2	-	2	TC-16-250/AM	11.81
CPC-70/AM	154	1	1	2	TC-16-250/AM	11.81
CPC-80/AM	176	1	-	3	TC-16-250/AM	11.81
CPC-90/AM	198	-	1	3	TC-16-250/AM	11.81
CPC-100/AM	220	-	-	4	TC-16-250/AM	11.81
CPC-120/AM	264	1	1	4	TC-16-340/AM	15.35
CPC-140/AM	308	-	1	5	TC-16-340/AM	15.35
CPC-160/AM	352	2	-	6	TCC-16-420/AM	18.50
CPC-180/AM	396	1	-	7	TCC-16-480/AM	20.87
CPC-200/AM	440	-	-	8	TCC-16-480/AM	20.87
CPC-230/AM	506	1	-	9	TCC-16-600/AM	25.59
CPC-260/AM	572	2	-	10	TCC-16-650/AM	27.56
CPC-290/AM	638	-	1	11	TCC-16-700/AM	29.53
CPC-K/AM	K	-	-	-	-	-

NOTE: Heavier K counterweights can be provided upon request.

CYLINDRICAL COUNTERWEIGHTS FOR TWIN BUNDLE



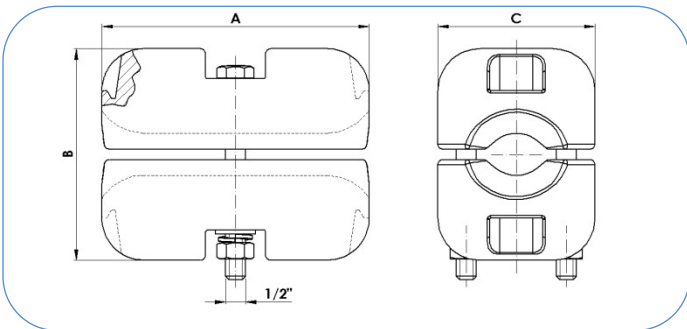
Material: Body: Cast iron EN-1563 equivalent to ASTM A48.
Steel Parts finish: Hot dip galvanizing CSA-G164 / ASTM A153.

Nut: ASTM A563.

Reference	Weight (lb)	Number of counterweights			Eye Bolt	Dimensions (inch)	
		CPC-5	CPC-15	CPC-25		L	A
CPCD-30/A/AM	66	-	2	-	TC-16-100/AM	5.91	A
CPCD-60/A/AM	132	2	-	2	TC-16-100/AM	5.91	A
CPCD-90/A/AM	198	2	2	2	TC-16-160/AM	8.27	A
CPCD-120/A/AM	264	4	-	4	TC-16-250/AM	11.81	A
CPCD-150/A/AM	330	-	-	6	TC-16-250/AM	11.81	A
CPCD-180/A/AM	396	-	2	6	TC-16-250/AM	11.81	A
CPCD-210/A/AM	462	2	-	8	TC-16-340/AM	15.35	A
CPCD-240/A/AM	528	2	2	8	TC-16-340/AM	15.35	A
CPCD-270/A/AM	594	4	-	10	TCC-16-420/AM	18.50	A
CPCD-300/A/AM	660	-	-	12	TC-16-340/AM	15.35	A
CPCD-K/A/AM	K	-	-	-	-	-	A

NOTES: Heavier K counterweights can be provided upon request.
 Dimension A depends on the bundle conductor distance.

JUMPER COUNTERWEIGHTS



Material: Body: Cast iron EN-1563 equivalent to ASTM A48.

Bolt: ASTM A325.

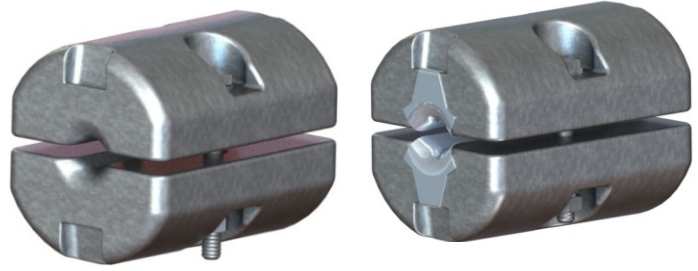
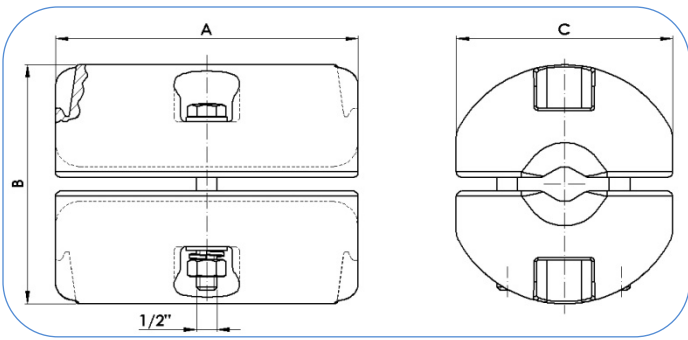
Nut: ASTM A563.

Steel Parts finish: Hot dip galvanizing CSA-G164 / ASTM A153.

Reference	Ø Conductor (inch)		Dimensions (inch)			Protector Plaque	Tightening Torque (in-lb)	Weight (lb)
	Min.	Max.	A	B	C			
CPC-10/12/AM	0.31	0.47	6.30	4.72	3.70	NO	260	22.05
CPB-10/18/AM	0.47	0.71	6.30	4.72	3.70	NO	260	22.05
CPB-10/26/AM	0.71	1.02	6.30	4.72	3.70	NO	260	22.05
CPB-10/32/AM	1.02	1.26	6.30	4.72	3.70	NO	260	22.05
CPB-10/40/AM	1.26	1.57	6.30	4.72	3.70	NO	260	22.05
CPC-10/12/P/AM	0.31	0.47	6.30	4.72	3.70	YES	260	22.05
CPB-10/18/P/AM	0.47	0.71	6.30	4.72	3.70	YES	260	22.05
CPB-10/26/P/AM	0.71	1.02	6.30	4.72	3.70	YES	260	22.05
CPB-10/32/P/AM	1.02	1.26	6.30	4.72	3.70	YES	260	22.05
CPB-10/40/P/AM	1.26	1.57	6.30	4.72	3.70	YES	260	22.05

NOTE: Special fasteners upon request.

JUMPER COUNTERWEIGHTS



Material: Body: Cast iron EN-1563 equivalent to ASTM A48.

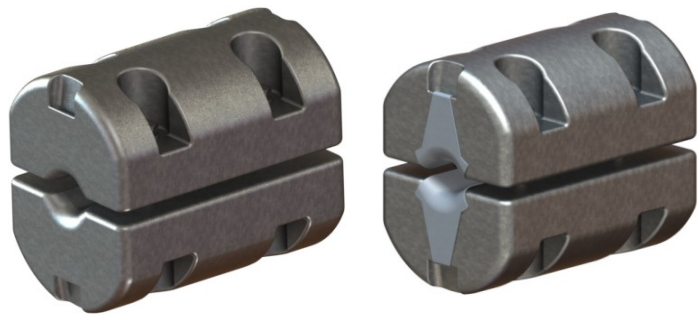
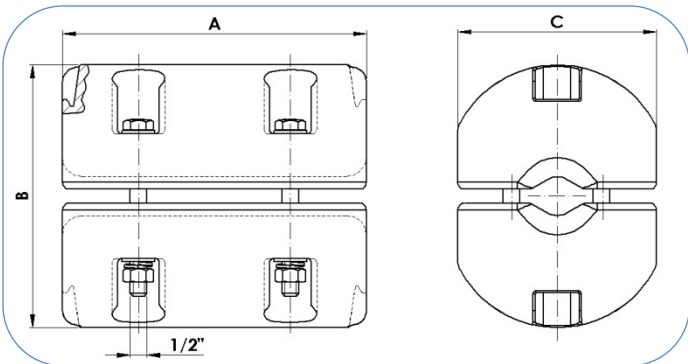
Bolt: ASTM A325.

Nut: ASTM A563.

Steel Parts finish: Hot dip galvanizing CSA-G164 / ASTM A153.

Reference	Ø Conductor (inch)		Dimensions (inch)			Protector Plaque	Tightening Torque (in-lb)	Weight (lb)
	Min.	Max.	A	B	C			
CPC-15/12/AM	0.31	0.47	6.89	5.12	4.92	NO	350	33.07
CPB-15/18/AM	0.47	0.71	6.89	5.12	4.92	NO	350	33.07
CPB-15/26/AM	0.71	1.02	6.89	5.12	4.92	NO	350	33.07
CPB-15/32/AM	1.02	1.26	6.89	5.12	4.92	NO	350	33.07
CPB-15/40/AM	1.26	1.57	6.89	5.12	4.92	NO	350	33.07
CPC-15/12/P/AM	0.31	0.47	6.89	5.12	4.92	YES	350	33.07
CPB-15/18/P/AM	0.47	0.71	6.89	5.12	4.92	YES	350	33.07
CPB-15/26/P/AM	0.71	1.02	6.89	5.12	4.92	YES	350	33.07
CPB-15/32/P/AM	1.02	1.26	6.89	5.12	4.92	YES	350	33.07
CPB-15/40/P/AM	1.26	1.57	6.89	5.12	4.92	YES	350	33.07

NOTE: Special fasteners upon request.



Material: Body: Cast iron EN-1563 equivalent to ASTM A48.

Bolt: ASTM A325.

Nut: ASTM A563.

Steel Parts finish: Hot dip galvanizing CSA-G164 / ASTM A153.

Reference	Ø Conductor (inch)		Dimensions (inch)			Protector Plaque	Tightening Torque (in-lb)	Weight (lb)
	Min.	Max.	A	B	C			
CPB-30/12/AM	0.31	0.47	8.66	7.09	5.67	NO	350	66.14
CPB-30/18/AM	0.47	0.71	8.66	7.09	5.67	NO	350	66.14
CPB-30/26/AM	0.71	1.02	8.66	7.09	5.67	NO	350	66.14
CPB-30/32/AM	1.02	1.26	8.66	7.09	5.67	NO	350	66.14
CPB-30/40/AM	1.26	1.57	8.66	7.09	5.67	NO	350	66.14
CPB-30/12/P/AM	0.31	0.47	8.66	7.09	5.67	YES	350	66.14
CPB-30/18/P/AM	0.47	0.71	8.66	7.09	5.67	YES	350	66.14
CPB-30/26/P/AM	0.71	1.02	8.66	7.09	5.67	YES	350	66.14
CPB-30/32/P/AM	1.02	1.26	8.66	7.09	5.67	YES	350	66.14
CPB-30/40/P/AM	1.26	1.57	8.66	7.09	5.67	YES	350	66.14

NOTE: Special fasteners upon request.