

MATERIALS

Parts for galvanized steel cable: Steel Alloy.

Parts for conductor cable, OPGW and Alumoweld: Aluminum or Aluminum Alloy.

Extruded profiles: Aluminum.

These fittings can be made of stainless steel - for highly corrosive environments - , or of high-resilience steel alloy for structures in very low temperatures.

PROTECTION AGAINST CORROSION

Steel parts: Hot dip galvanizing according to CSA-G164 and ASTM A153 standards.

STANDARDS

All connectors are manufactured according to IEC 61284 standard.

Fasteners: galvanised steel, as per ASTM A325 and ASTM A563 standards.

Forged material - steel: EN-10083 equivalent to ASTM A576.

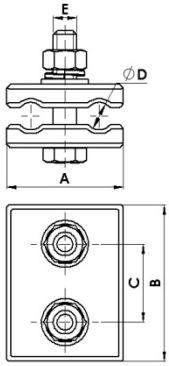
Forged material - aluminum: EN-573 equivalent to ASTM B221.

Cast aluminum alloy material: EN-1706 equivalent to ANSI A413.0.

Extruded aluminum materials: EN-755 equivalent to ASTM B221.

Upon request, the connectors can be supplied with other fasteners; stainless steel, corona free or special fasteners.

PARALLEL CONNECTORS FOR LINE CONDUCTOR



Material: A1 Alloy EN-1706 equivalent to ANSI A413.0.
Steel parts finish: Hot dip galvanizing CSA-G164 / ASTM A153.

Bolt: ASTM A325.
Nut: ASTM A563.

Reference	ØD Conductor (inch)		Dimensions (inch)				Tightening Torque (in-lb)	Weight (lb)
	Min.	Max.	A	B	C	E		
PC-6-14/AM	0,24	0,55	2,36	3,15	1,57	1/2	260	0,99

NOTE: Special fasteners upon request

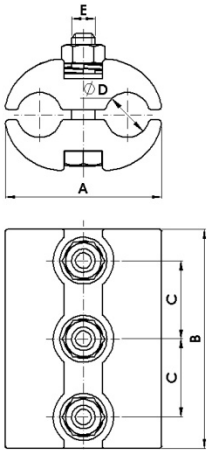
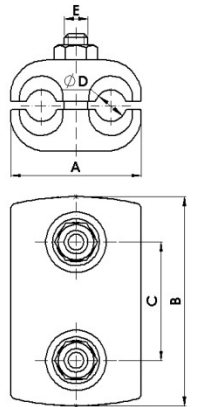


Material: A1 Alloy EN-1706 equivalent to ANSI A413.0.
Steel parts finish: Hot dip galvanizing CSA-G164 / ASTM A153.

Bolt: ASTM A325.
Nut: ASTM A563.

Reference	ØD Conductor (inch)		Dimensions (inch)				Tightening Torque (in-lb)	Weight (lb)
	Min.	Max.	A	B	C	E		
PC-12,5/15/AM	0.49	0.59	2.64	4.21	2.36	1/2	440	1.65
PC-15/18,5/AM	0.59	0.73	2.64	4.21	2.36	1/2	440	1.54

NOTE: Special fasteners upon request



Material: A1 Alloy EN-1706 equivalent to ANSI A413.0.
Steel parts finish: Hot dip galvanizing CSA-G164 / ASTM A153.

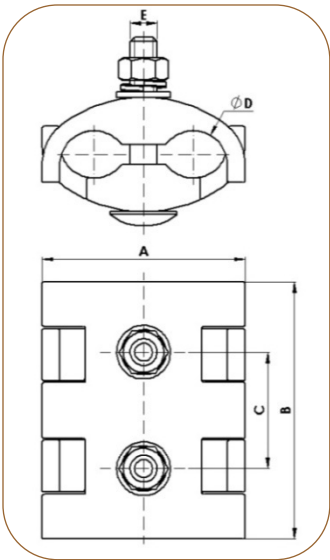
Bolt: ASTM A325.
Nut: ASTM A563.

Reference	ØD Conductor (inch)		Dimensions (inch)				Tightening Torque (in-lb)	Weight (lb)
	Min.	Max.	A	B	C	E		
GPC-3 Ø17-20/AM	0.67	0.79	3.15	4.41	1.57	1/2	260	2.20
GPC-3 Ø20-23/AM	0.79	0.91	3.15	4.41	1.57	1/2	260	2.09
GPC-3 Ø23-25/AM	0.91	0.98	3.15	4.41	1.57	1/2	260	1.98
GPC-3 Ø25-27/AM	0.98	1.06	3.15	4.41	1.57	1/2	260	1.94
GPC-3 Ø27-30/AM	1.06	1.18	3.94	4.41	1.57	1/2	260	2.43
GPC-3 Ø30-33/AM	1.18	1.30	3.94	4.41	1.57	1/2	260	2.31

NOTE: Special fasteners upon request



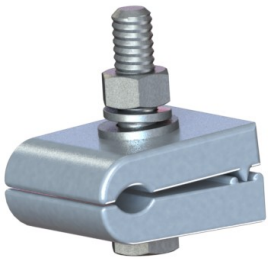
PARALLEL CONNECTORS FOR ALUMOWELD, OPGW, AL AND AL-AC EARTHWIRE



Material: A1 Alloy EN-1706 equivalent to ANSI A413.0. **Bolt:** ASTM A325.
Steel parts finish: Hot dip galvanizing CSA-G164 / ASTM A153. **Nut:** ASTM A563.

Reference	ØD Conductor (inch)		Dimensions (inch)				Tightening Torque (in-lb)	Weight (lb)
	Min.	Max.	A	B	C	E		
GPC-8/16/AM	0.31	0.63	2.13	2.34	1.22	3/8	220	0.55
GPC-11/28/AM	0.43	1.10	3.58	4.53	2.05	1/2	260	1.92

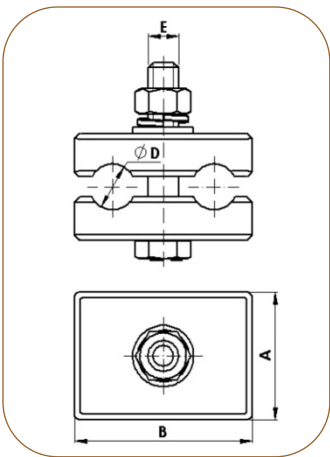
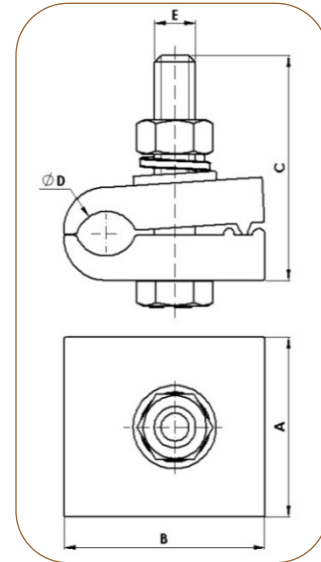
NOTE: Special fasteners upon request



Material: A1 Alloy EN-1706 equivalent to ANSI A413.0. **Bolt:** ASTM A325.
Steel parts finish: Hot dip galvanizing CSA-G164 / ASTM A153. **Nut:** ASTM A563.

Reference	ØD Conductor (inch)		Dimensions (inch)				Tightening Torque (in-lb)	Weight (lb)
	Min.	Max.	A	B	C	E		
GCSAL-8/14/AM	0.31	0.55	2.05	2.28	2.56	1/2	260	0.62
GCSAL-14/18/AM	0.55	0.71	2.05	2.28	2.56	1/2	260	0.55
GCSAL-18/24/AM	0.71	0.94	2.36	2.56	3.15	1/2	260	0.99

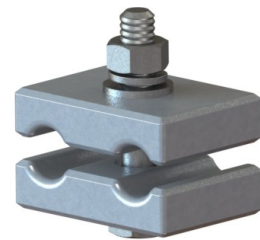
NOTE: Special fasteners upon request



Material: A1 Alloy EN-1706 equivalent to ANSI A413.0. **Bolt:** ASTM A325.
Steel parts finish: Hot dip galvanizing CSA-G164 / ASTM A153. **Nut:** ASTM A563.

Reference	ØD Conductor (inch)		Dimensions (inch)			Tightening Torque (in-lb)	Weight (lb)
	Min.	Max.	A	B	E		
GCPSAL-8/14/AM	0.31	0.55	1.97	2.76	1/2	260	0.88
GCPSAL-14/18/AM	0.55	0.71	1.97	2.76	1/2	260	0.82
GCPSAL-18/24/AM	0.71	0.94	1.97	2.76	1/2	260	0.77

NOTE: Special fasteners upon request



Material: A1 Alloy EN-1706 equivalent to ANSI A413.0. **Bolt:** ASTM A325.
Steel parts finish: Hot dip galvanizing CSA-G164 / ASTM A153. **Nut:** ASTM A563.

Reference	ØD Conductor (inch)		Dimensions (inch)				Tightening Torque (in-lb)	Weight (lb)
	Min.	Max.	A	B	C	E		
PC-6-14/AM	0.24	0.55	2.36	3.15	1.57	1/2	260	0.99

NOTE: Special fasteners upon request

