



MATERIALS

Steel and aluminum manufactured parts.

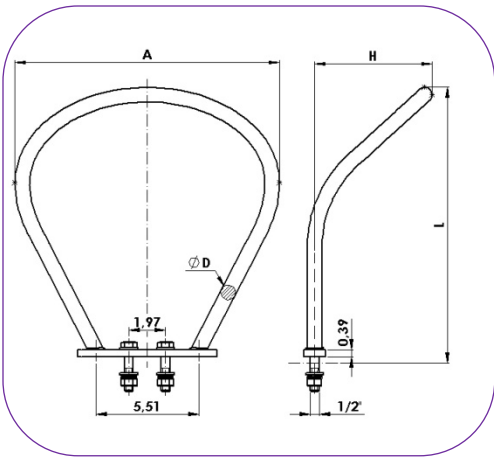
PROTECTION AGAINST CORROSION

Hot dip galvanizing according to CSA-G164 and ASTM A153 standards.

STANDARDS

All protections are manufactured according to IEC 61284 standard.
Fasteners: galvanized steel as per ASTM A325 and ASTM A563 standards.
Round steel material: EN-10025 equivalent to ASTM A36 or ASTM A572 standards.
Aluminum tube materials: EN-755 equivalent to ASTM B221 standard.

RACQUETS



Material: Round steel EN-10025 equivalent to ASTM A36 or ASTM A572.

Bolt: ASTM A325.

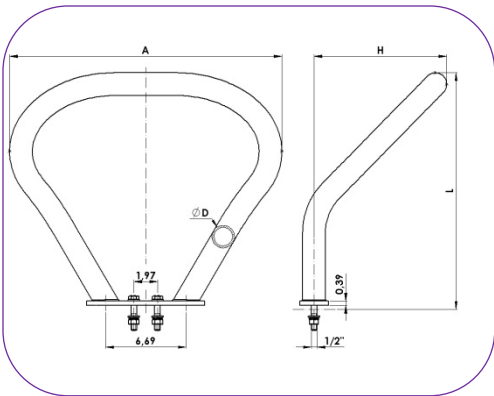
Steel parts finish: Hot dip galvanizing CSA-G164 / A153.

Nut: ASTM A563.

Reference	Dimensions (inch)				Voltage (kV) Recommended	Weight (lb)
	L	H	D	A		
RA-37/16/AM	14.76	6.30	0.79	14.17	>220	7.03
RA-37/26/AM	14.76	10.24	0.79	14.17	>220	7.87

Arc distance: "H" varies according to the required arc distance.

I_{SC}: "D" varies according to the required I_{SC}.



Material: Round steel EN-10025 equivalent to ASTM A36 or ASTM A572.

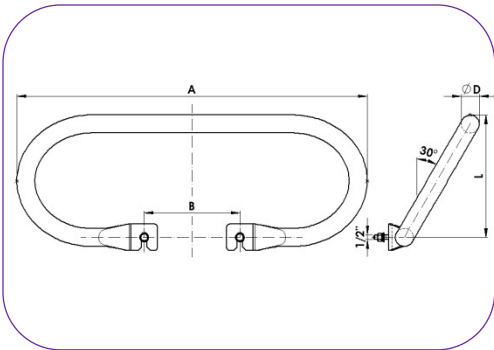
Bolt: ASTM A325.

Steel parts finish: Hot dip galvanizing CSA-G164 / A153.

Nut: ASTM A563.

Reference	Dimensions (inch)				Voltage (kV) Recommended	Weight (lb)
	L	H	D	A		
RA-50/28/AM	19.69	11.02	1.89x0.11	22.64	>220	13.01

Arc distance: "H" varies according to the required arc distance.



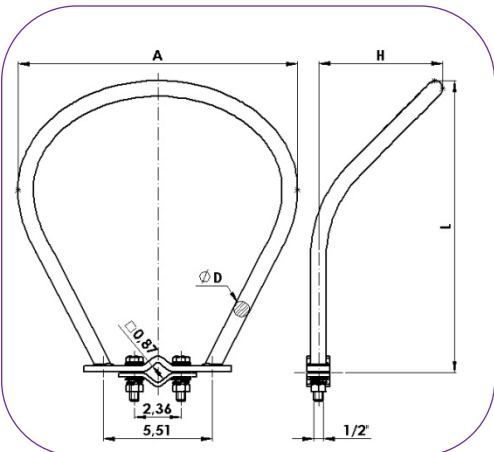
Material: Aluminum tube EN-755 equivalent to ASTM B221.

Bolt: ASTM A325.

Steel parts finish: Hot dip galvanizing CSA-G164 / A153.

Nut: ASTM A563.

Reference	Dimensions (inch)				Voltage (kV) Recommended	Weight (lb)
	L	D	A	B		
RA-50/22/AM	12.80	1.89	36.61	10.00	>220	5.45



Material: Round steel EN-10025 equivalent to ASTM A36 or ASTM A572.

Bolt: ASTM A325.

Steel parts finish: Hot dip galvanizing CSA-G164 / A153.

Nut: ASTM A563.

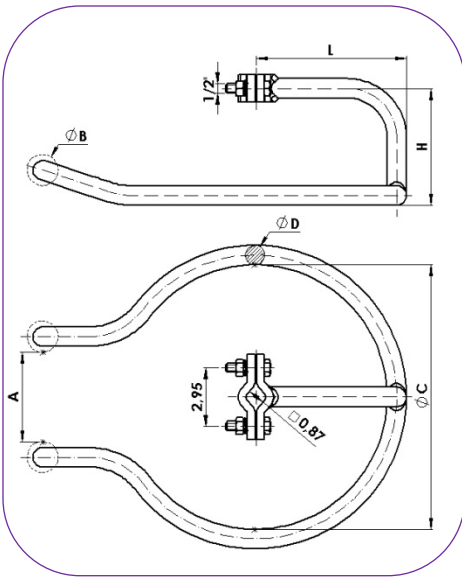
Reference	Dimensions (inch)				Voltage (kV) Recommended	Weight (lb)
	L	H	D	A		
RAC-37/16/AM	14.76	6.30	0.79	14.17	>220	7.12
RAC-37/26/AM	14.76	10.24	0.79	14.17	>220	-

Arc distance: "H" varies according to the required arc distance.

I_{SC}: "D" varies according to the required I_{SC}.



RINGS



Material: Round steel EN-10025 equivalent to ASTM A36 or ASTM A572.

Steel parts finish: Hot dip galvanizing CSA-G164 / A153.

Bolt: ASTM A325.

Nut: ASTM A563.

Reference	Dimensions (inch)						Ball	Voltage (kV) Recommended	Weight (lb)
	L	H	D	A	C	B			
DCAA-34/15/AM	7.68	5.91	0.63	5.12	13.39	-	NO	150-400	-
DCAA-34/15/25/AM	7.68	5.91	0.98	5.12	13.39	-	NO	150-400	14.04
DCAA-34/H/D/AM	7.68	H	D	A	13.39	-	NO	150-400	-
DCAB-34/11/AM	7.68	4.33	0.63	4.92	13.39	1.18	YES	150-400	-
DCAB-34/11/25/AM	7.68	4.33	0.98	4.53	13.39	1.57	YES	150-400	14.29
DCAB-34/H/D/AM	7.68	H	D	A	13.39	1.18-1.57	YES	150-400	-

Arc distance: "H" varies according to the required arc distance.

I_{sc}: "D" varies according to the required I_{sc}.



OTHER PROTECTIONS

Other type of protections: arcing horns, adjustable arcing horns, lateral equipotential rings.

